

THE GUIDE

PRO+

THE FACADE SYSTEM OF THE FUTURE



# PRO+ THE FACADE SYSTEM OF THE FUTURE

PRO+ is a building authority-approved facade system that offers plenty of scope for design, from siding and photovoltaic to greening modules. All panels can be combined flush with each other as required.

- + COMPLETE SYSTEM SIDING | PV | GREEN
- + FLUSH-MOUNTED
- + FLEXIBLE COMBINATIONS
- + INVISIBLY ATTACHED
- + PATENTED MODULE TUBE



## PRO+ THE FACADE SYSTEM OF THE FUTURE



With PRO+, architects, fabricators and building owners get what they want: minimal installation effort with maximum cost efficiency. Serial refurbishment is also possible thanks to the high degree of prefabrication of our modules.



Our suspended, rear-ventilated facade system protects the building from environmental influences and prevents structural damage caused by moisture. All modules are attached quickly, securely and invisibly using a 2-part click system and can be flexibly combined with each other.



Our siding panels can be made from 100% recyclable materials. We produce on our own production line at our main site in Friedrichshafen. For the PV systems and green facade elements, we work together with our competent and reliable partners from Germany.



- ST STEEL
- AL ALUMINIUM
- VA STAINLESS STEEL
- PRO+ SIDING
- PRO+ PV
- PRO+ GREEN

<p>PRO+ FACADE MODULE <span style="float: right;">PAGE 5</span></p> <p>F01 <span style="float: right;"><span style="color: orange;">■</span> <span style="border: 1px solid black; padding: 2px;">ST</span> <span style="border: 1px solid black; padding: 2px;">AL</span></span></p>	<p>PRO+ PV MODULE <span style="float: right;">PAGE 7</span></p> <p>P01 <span style="float: right;"><span style="color: black;">■</span></span></p>	<p>PRO+ GREEN MODULE <span style="float: right;">PAGE 10</span></p> <p>G01 <span style="float: right;"><span style="color: green;">■</span></span></p>	<p>PRO+ MODULE TUBE <span style="float: right;">PAGE 15</span></p> <p>M75      M115 <span style="float: right;"><span style="color: green;">■</span> <span style="color: black;">■</span> <span style="color: orange;">■</span> <span style="border: 1px solid black; padding: 2px;">AL</span></span></p>	<p>PRO+ SOFFIT CONNECTION <span style="float: right;">PAGE 19/20</span></p> <p>W01</p> <p>W02</p> <p>L01</p> <p>L02 <span style="float: right;"><span style="color: green;">■</span> <span style="color: black;">■</span> <span style="color: orange;">■</span> <span style="border: 1px solid black; padding: 2px;">ST</span> <span style="border: 1px solid black; padding: 2px;">AL</span></span></p>
<p>PRO+ BRACKET FIXED POINT <span style="float: right;">PAGE 16</span></p> <p>U01-FP <span style="float: right;"><span style="color: green;">■</span> <span style="color: black;">■</span> <span style="color: orange;">■</span> <span style="border: 1px solid black; padding: 2px;">VA</span></span></p>	<p>PRO+ FLEX <span style="float: right;">PAGE 24</span></p> <p>X02   TOP <span style="float: right;"><span style="color: green;">■</span> <span style="color: black;">■</span> <span style="border: 1px solid black; padding: 2px;">AL</span></span></p>	<p>PRO+ BASEDESIGN <span style="float: right;">PAGE 25</span></p> <p>S01      S02 <span style="float: right;"><span style="color: green;">■</span> <span style="color: black;">■</span> <span style="color: orange;">■</span> <span style="border: 1px solid black; padding: 2px;">ST</span> <span style="border: 1px solid black; padding: 2px;">AL</span></span></p>	<p>PRO+ TRANSVERSE GAP <span style="float: right;">PAGE 17</span></p> <p>Q01      Q02      Q03 <span style="float: right;"><span style="color: green;">■</span> <span style="color: black;">■</span> <span style="color: orange;">■</span> <span style="border: 1px solid black; padding: 2px;">ST</span> <span style="border: 1px solid black; padding: 2px;">AL</span></span></p>	
<p>PRO+ BRACKET MOVING POINT <span style="float: right;">PAGE 16</span></p> <p>U02-LP <span style="float: right;"><span style="color: green;">■</span> <span style="color: black;">■</span> <span style="color: orange;">■</span> <span style="border: 1px solid black; padding: 2px;">VA</span></span></p>	<p>PRO+ FLEX <span style="float: right;">PAGE 24</span></p> <p>X01   BOTTOM <span style="float: right;"><span style="color: green;">■</span> <span style="color: black;">■</span> <span style="border: 1px solid black; padding: 2px;">AL</span></span></p>	<p>PRO+ CORNER DESIGN <span style="float: right;">PAGE 18</span></p> <p>E01      E02      E03 <span style="float: right;"><span style="color: green;">■</span> <span style="color: black;">■</span> <span style="color: orange;">■</span> <span style="border: 1px solid black; padding: 2px;">ST</span> <span style="border: 1px solid black; padding: 2px;">AL</span></span></p>		
<p>PRO+ ATTICA DESIGN <span style="float: right;">PAGE 21/22</span></p> <p>A01      A02      A03 <span style="float: right;"><span style="color: green;">■</span> <span style="color: black;">■</span> <span style="color: orange;">■</span> <span style="border: 1px solid black; padding: 2px;">ST</span> <span style="border: 1px solid black; padding: 2px;">AL</span></span></p>				

## PRO+ SIDING



### PRO+ Siding Panel

Standard deck width: 250 mm to 1100 mm  
up to 600 mm with standard length approval  
to 7.000 mm

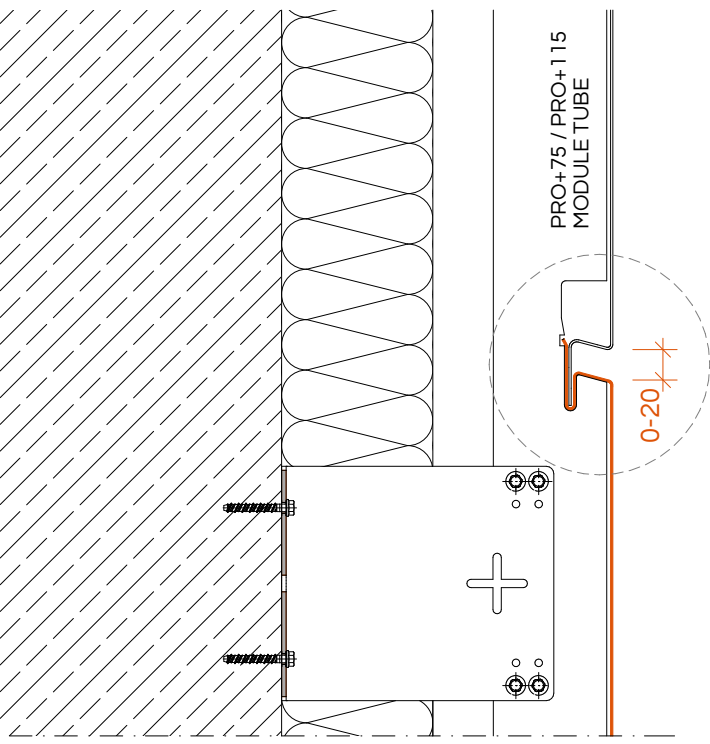
Longer dimensions available on request

Aluminium: 1,5 mm | 1,8 mm | 2 mm  
Steel: 1,2 mm | 1,25 mm | 1,5 mm | 2 mm

Gap 0 to 20 mm

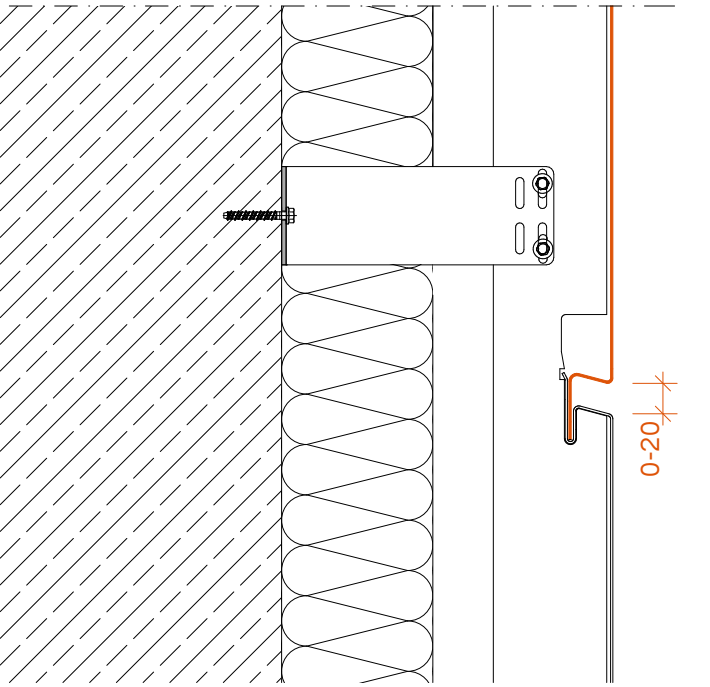
Surface coating

Polyester 25 µm | PVDF 25 µm | PUR/PA 50 µm



PRO+75 / PRO+115  
MODULE TUBE

0-20

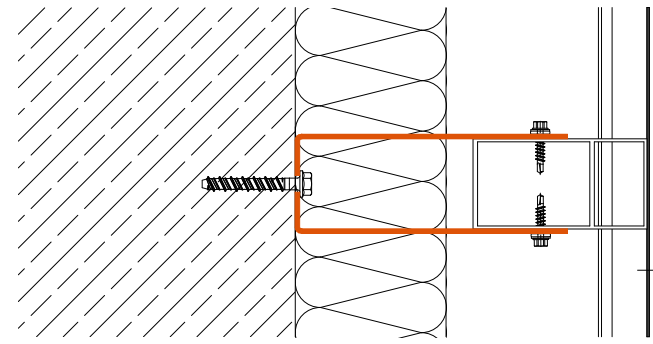


0-20

VERTICAL CUT M 1:5

32

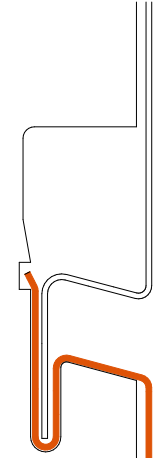
250 - 1.100MM  
UP TO 600MM WITH APPROVAL



PRO+75 / PRO+115  
MODULE TUBE

HORIZONTAL CUT M 1:5

F01 | PRO+ SIDING MODULE



DETAIL M 1:2



## PRO+ PV

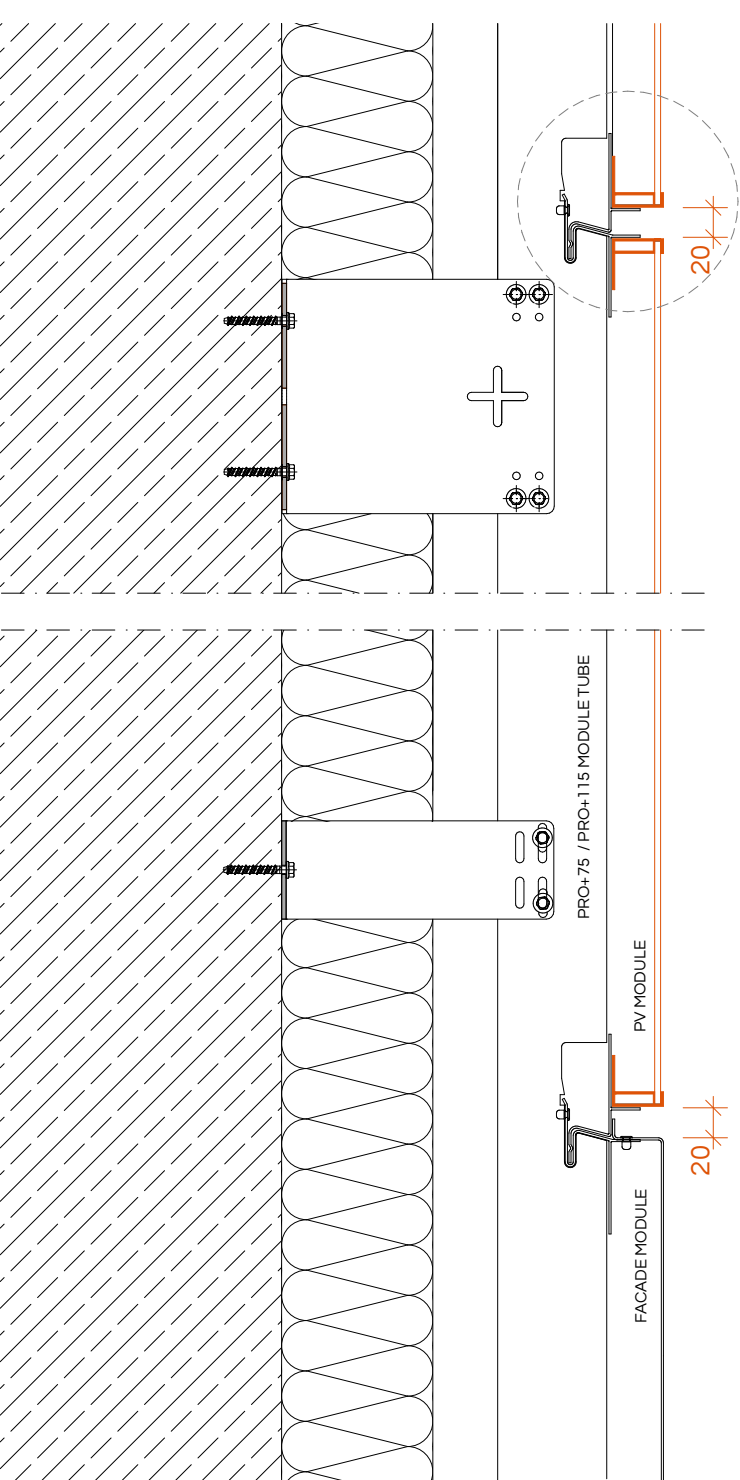


PRO+ PV enables the use of approved PV modules that are integrated flush into the facade.

The PV modules are clicked into the substructure using the PRO+ Flex rails.

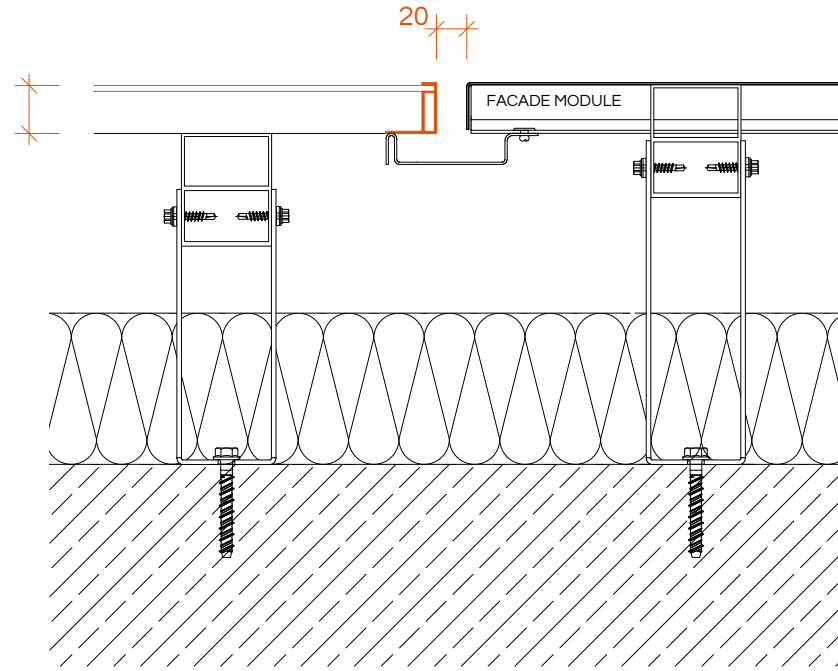
Flex rail top / bottom  
Aluminium: 1,6 mm black anodized.

Length: Adapted to your module.



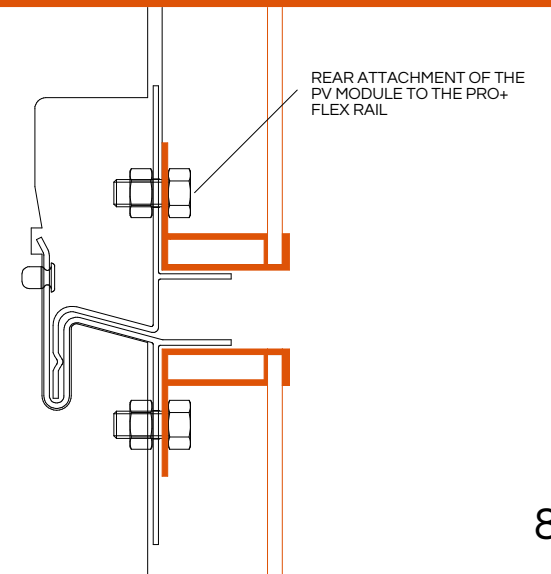
VERTICAL CUT M 1:5

X = depending on PV module



HORIZONTAL CUT M 1:5

## P01 | PHOTOVOLTAIC MODULE



DETAIL M 1:2



# PRO+

FACADE SYSTEM OF THE FUTURE



PRO+ GREEN



PRO+ Green Panel

Standard deck width: 500 mm

Aluminium: 1,5 mm  
Surface coating Polyester 25 µm  
Fleece system 3-ply.

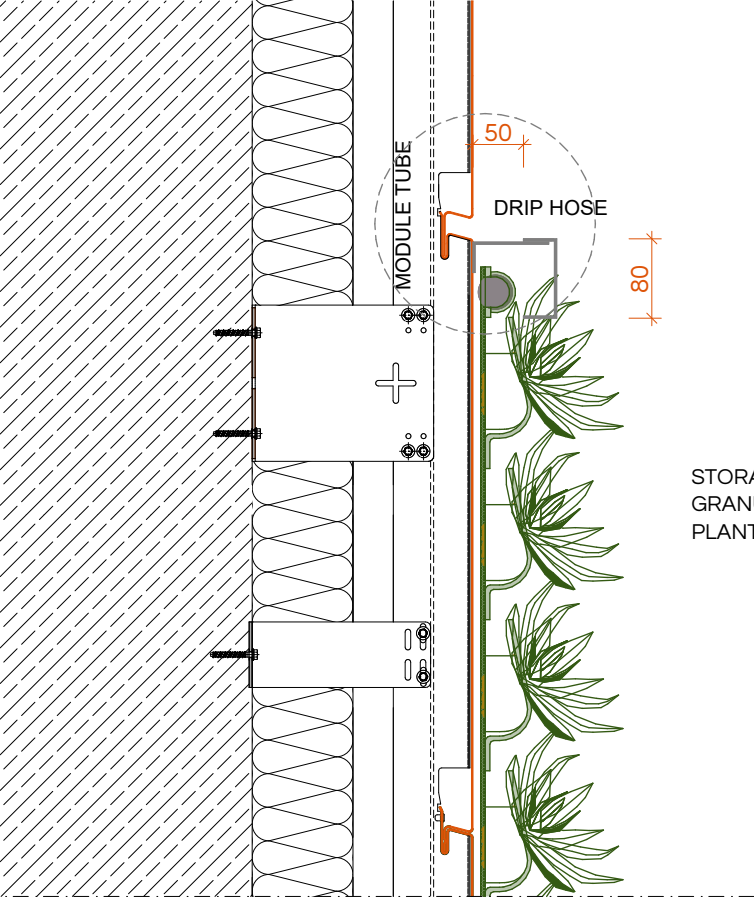
Water-saturated weight: max. <math><35 \text{ kg/m}^2</math>

Choice of over 300 plant species.

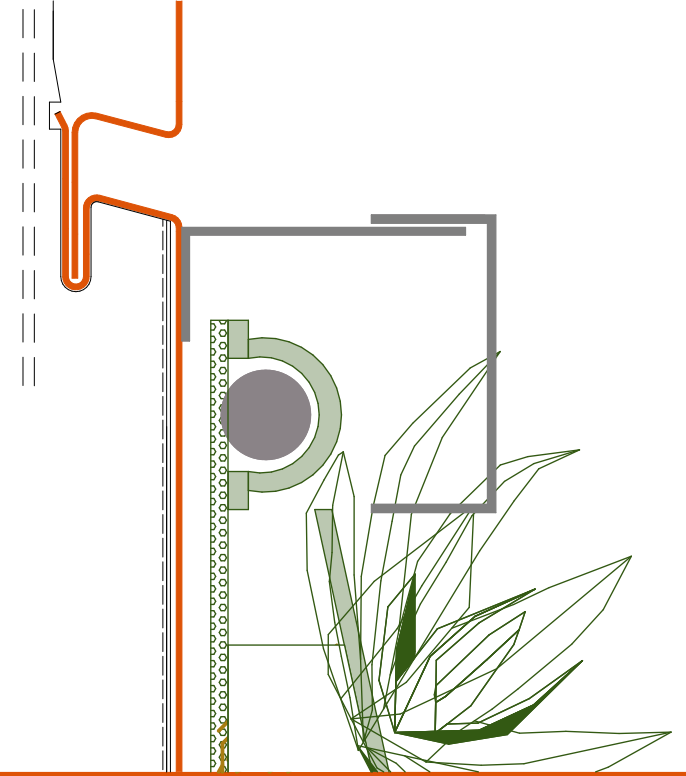
Fire classification: A2 s1-d0 according to DIN EN 13501-1



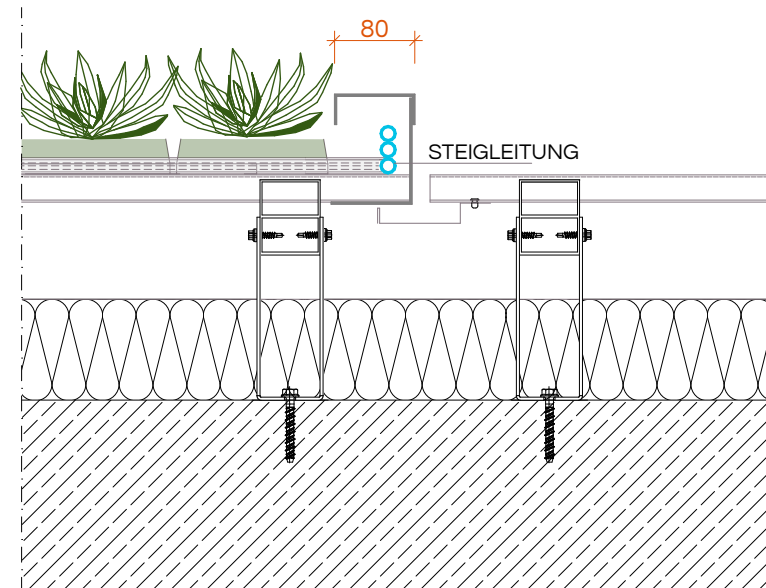
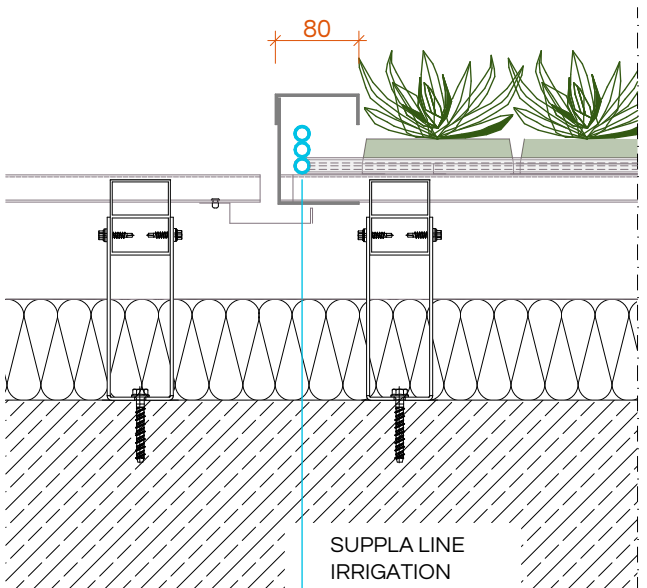
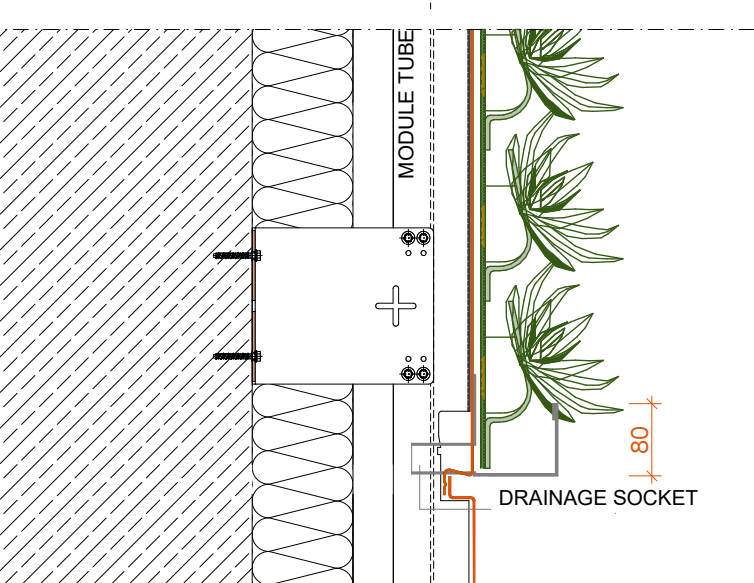




DETAIL M 1:2



G01 | PRO+ GREEN MODULE



VERTICAL CUT M 1:7,5


HORIZONTAL CUT M 1:7,5



 PRO+ SIDING

 PRO+ PV

 PRO+ GREEN

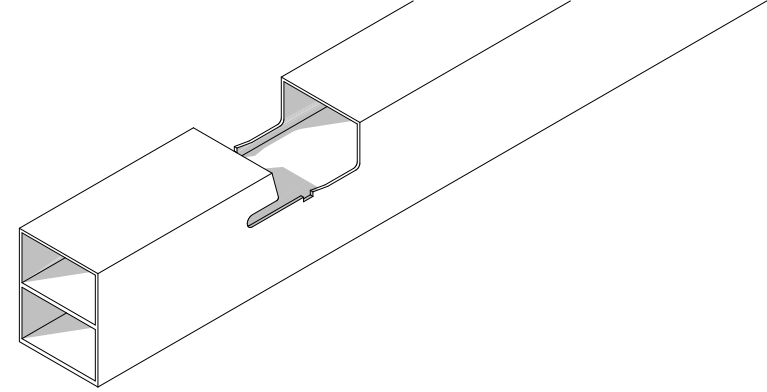
 ST STEEL

 AL ALUMINIUM

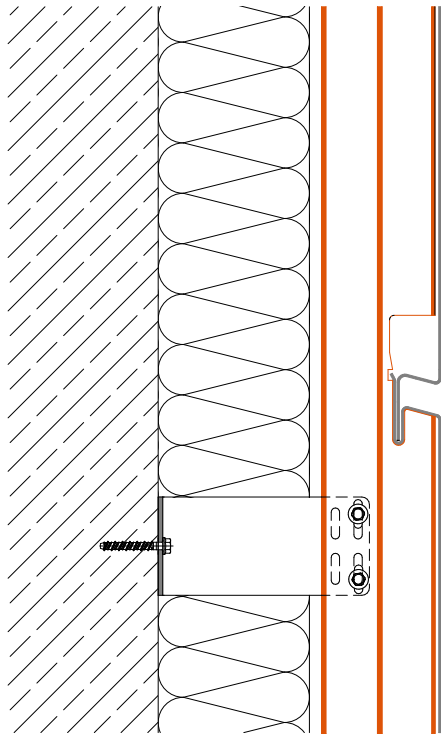
 VA STAINLESS STEEL

## PRO+ CONNECTION DETAILS

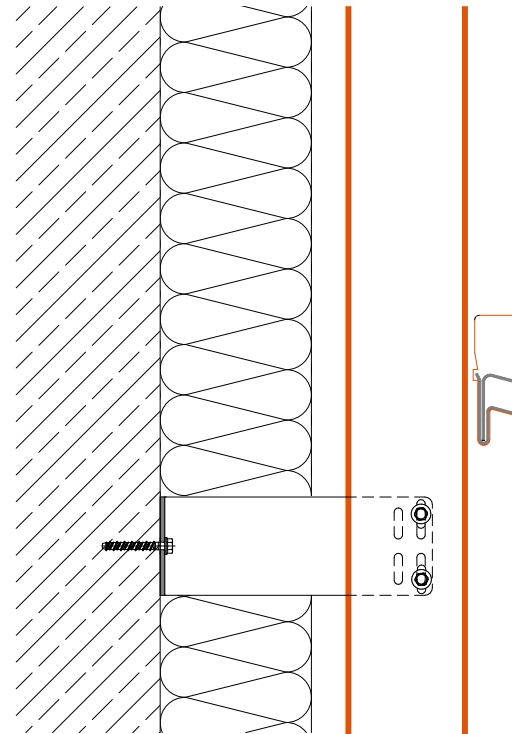
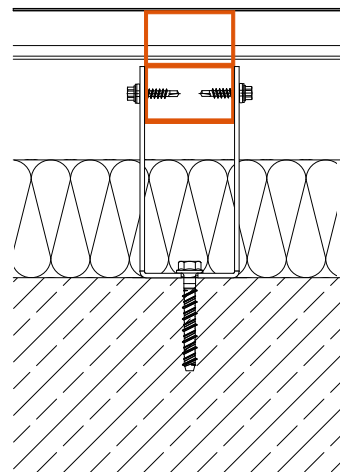
# M75 / M115 | PRO+ MODULE TUBE



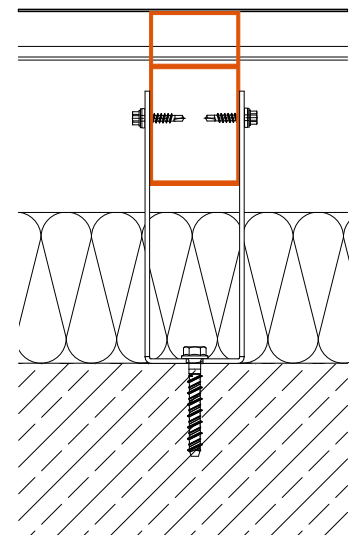
VERTICAL CUT M 1:5



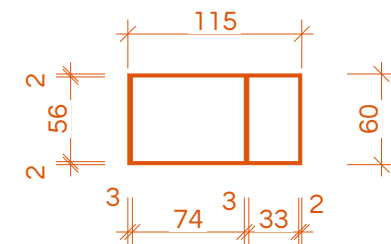
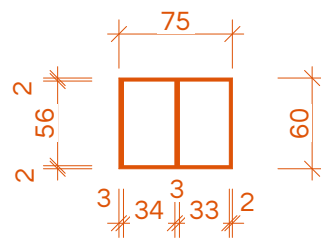
HORIZONTAL CUT M 1:5



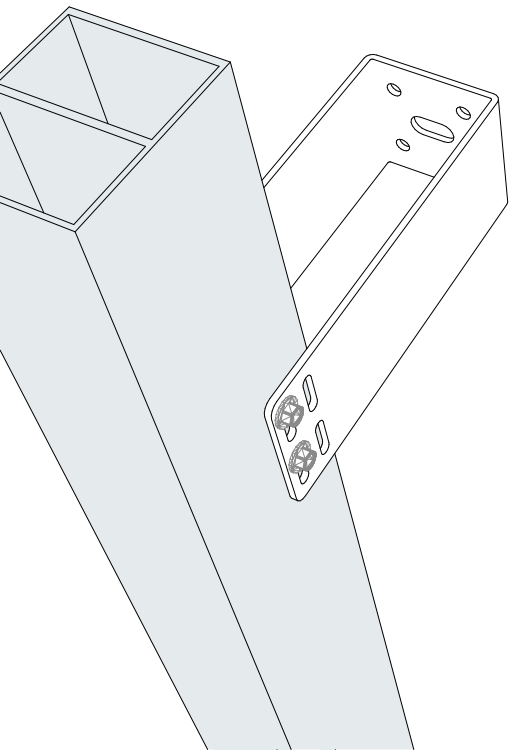
HORIZONTAL CUT M 1:5



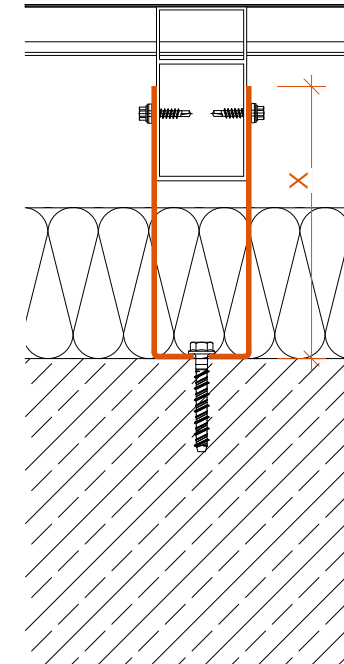
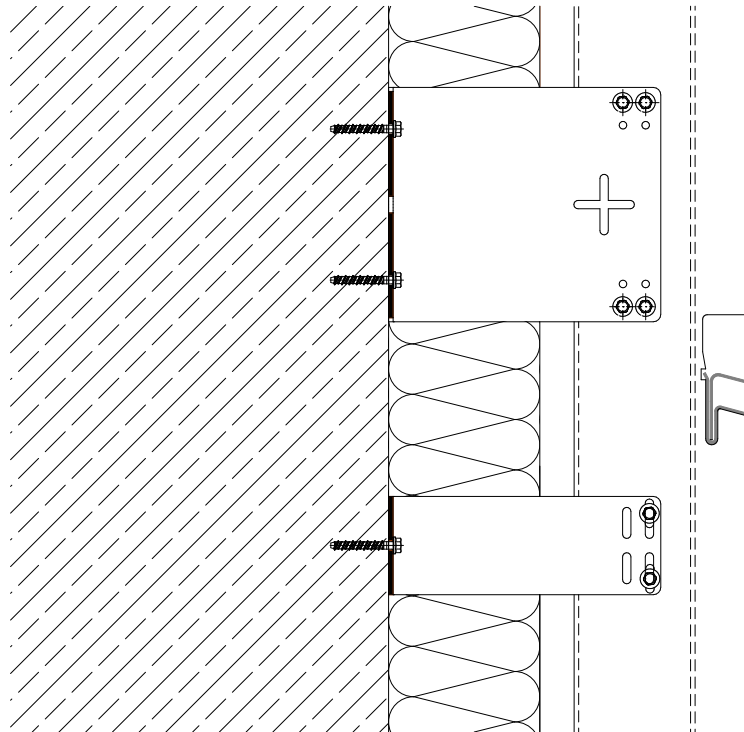
VERTICAL CUT M 1:5



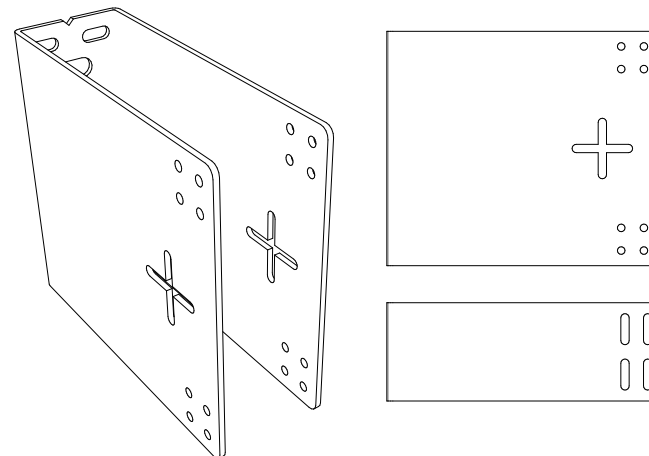
# U01-FP | BRACKET FIXED POINT | U02-LP | BRACKET MOVING POINT



VERTICAL CUT M 1:5



HORIZONTAL CUT M 1:5



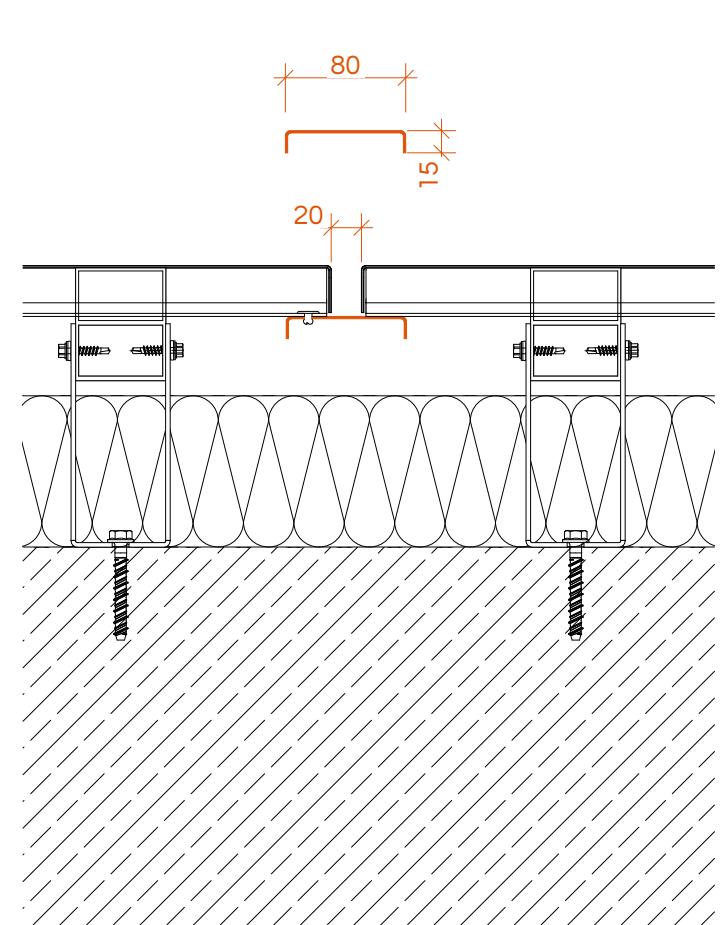
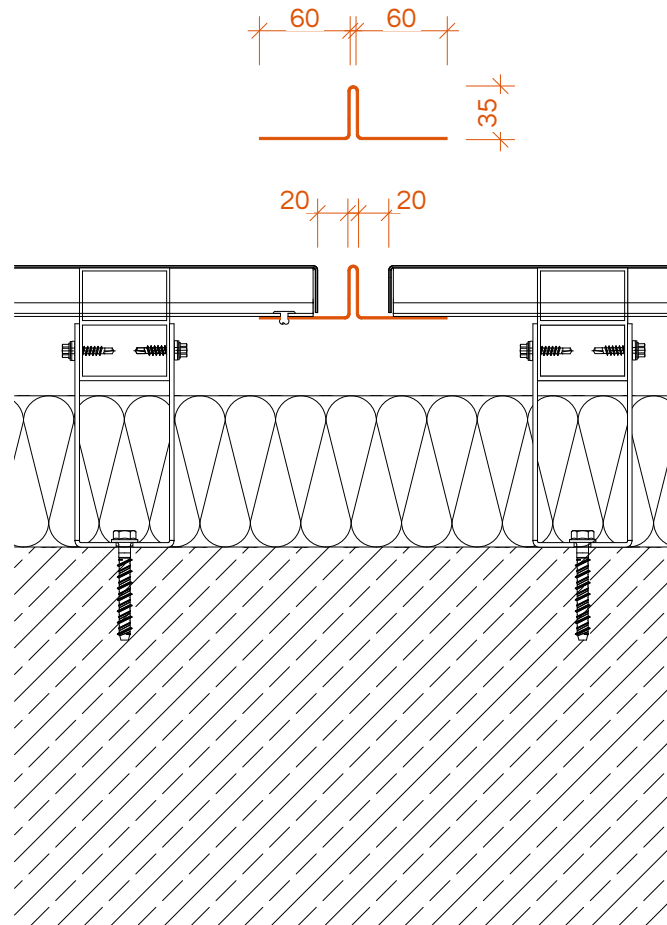
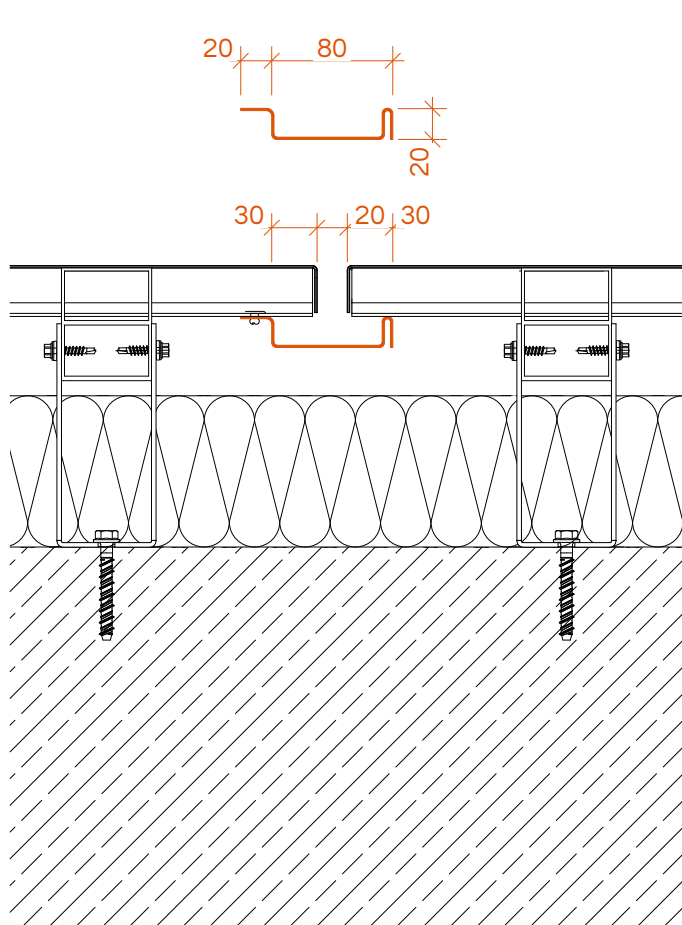
U01-FP | bracket fixed point  
1x per module tube

U02-LP | bracket moving point  
several times per module tube according  
to static requirements



# Q01 / Q02 / Q03 | TRANSVERSE GAP

HORIZONTAL CUT M 1:5



Q01 PRO+ transverse gap  
"shadow gap" - with invisible recessed gap sheet

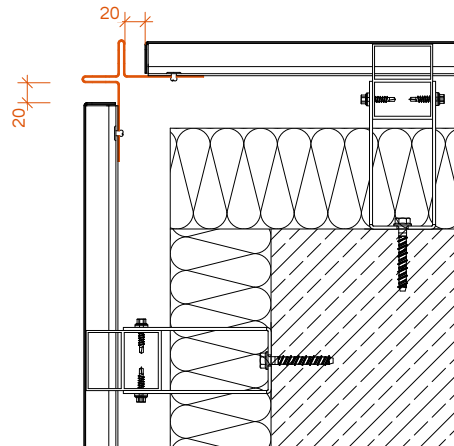
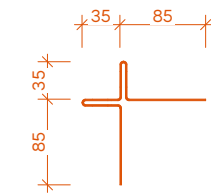
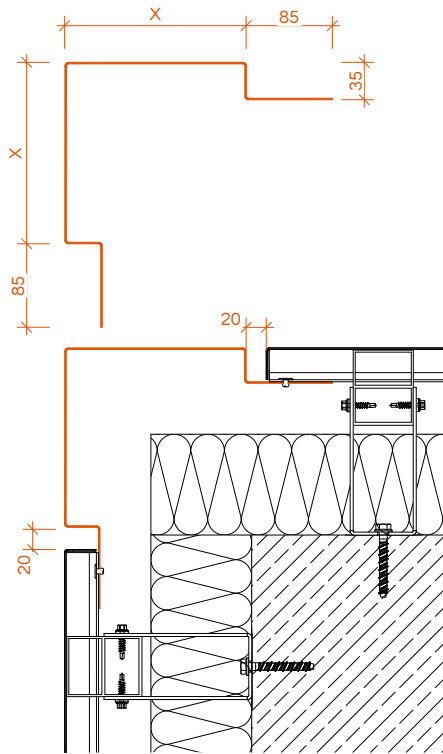
Q02 PRO+ transverse gap  
"double gap" - standing seam gap

Q03 PRO+ transverse gap  
"inconspicuous" - with invisible gap sheet



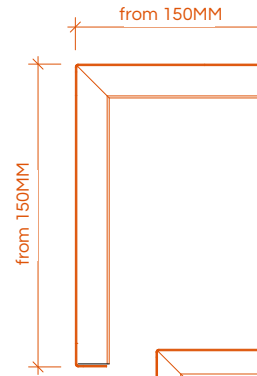
# E01 / E02 / E03 | CORNER DESIGN

HORIZONTAL CUT M 1:7,5

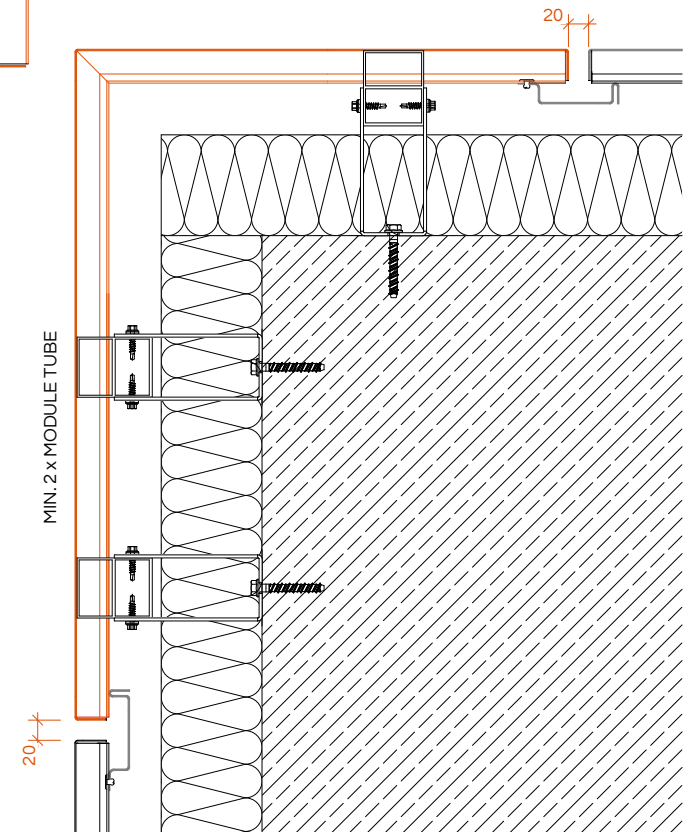


E02 PRO+ corner design  
negative corner

E01 PRO+ corner design  
isosceles with positive corner  
and shadow gap



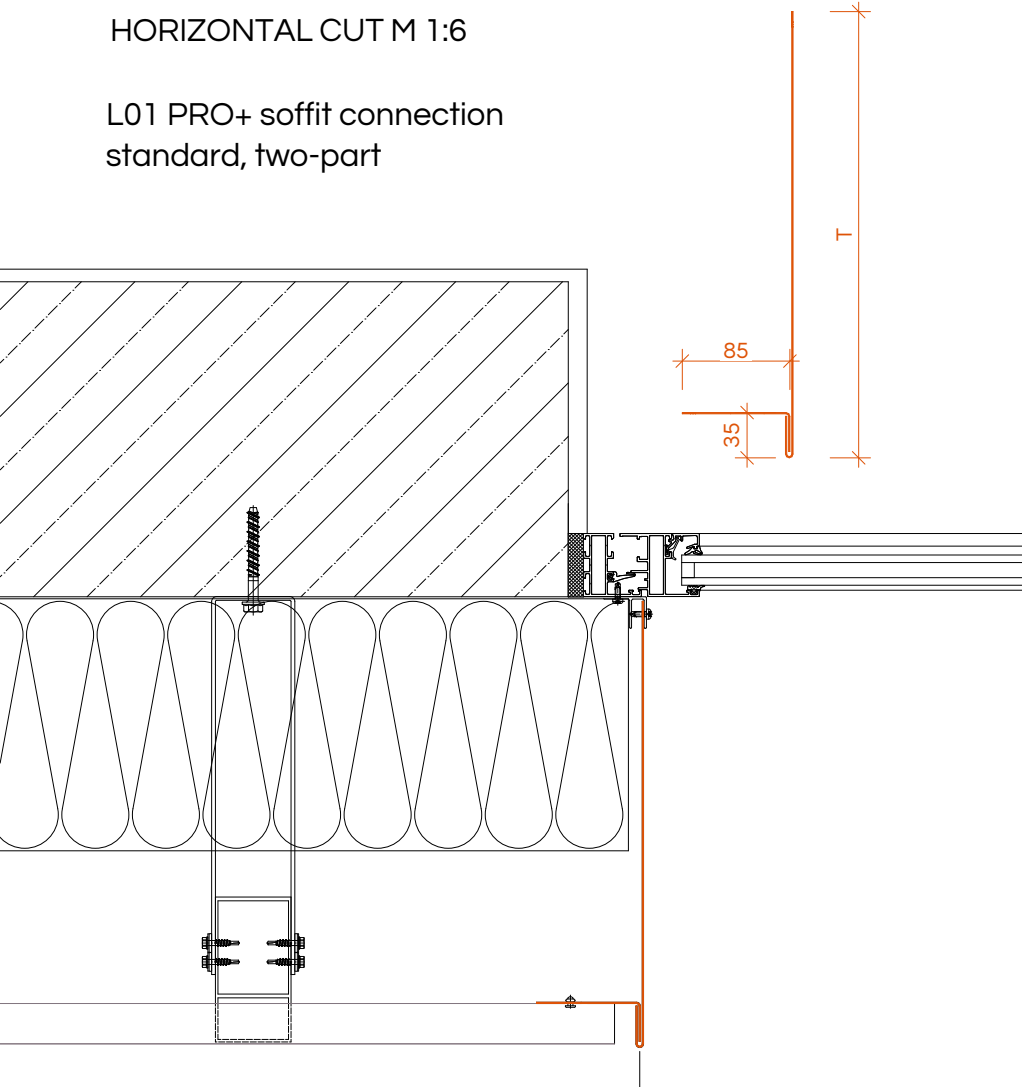
E03 PRO+ corner design  
corner design made of folded  
facade element  
total length maximum 7,000 MM



# L01 / L02 | LATERAL SOFFIT CONNECTION

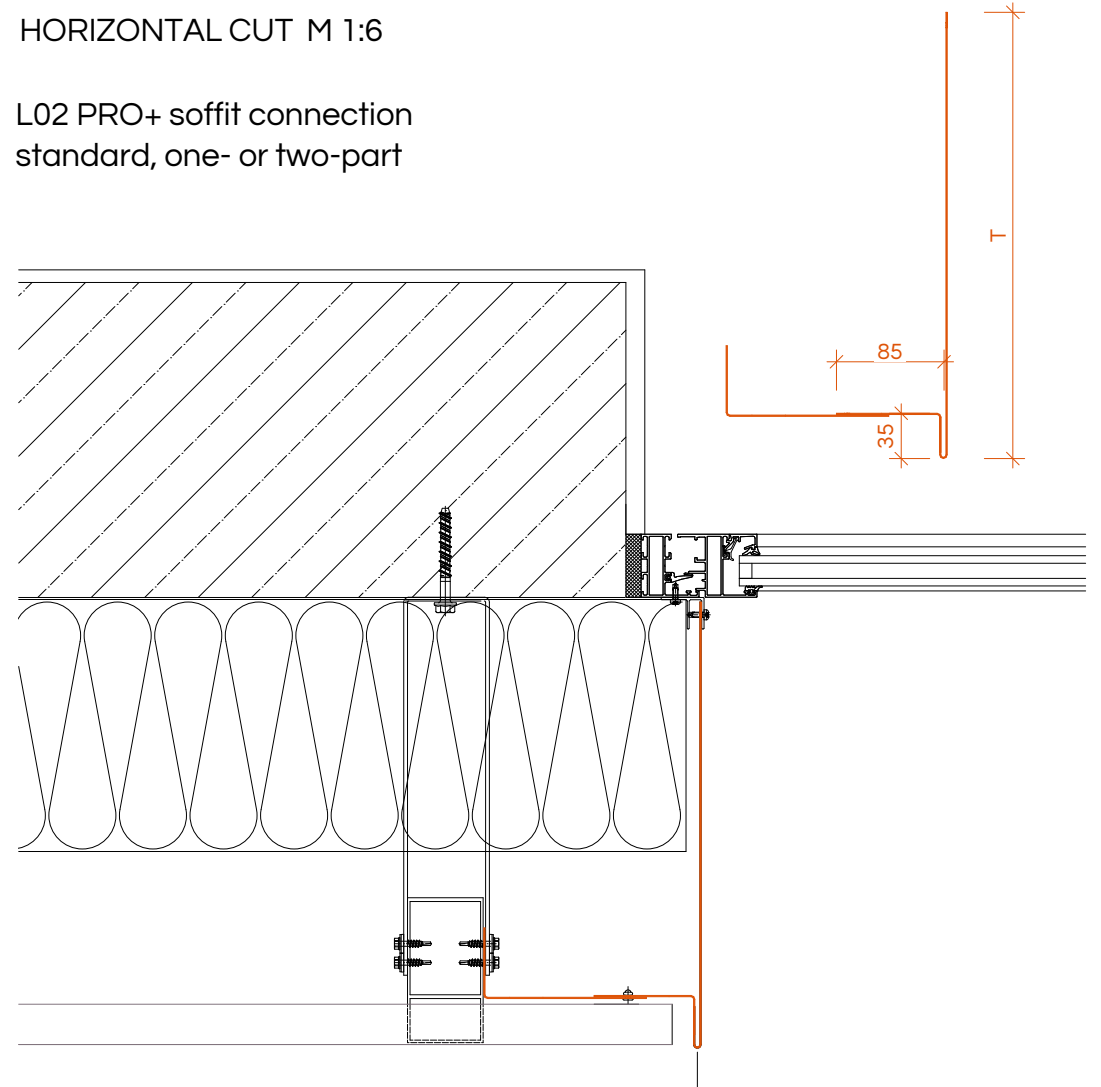
HORIZONTAL CUT M 1:6

L01 PRO+ soffit connection  
standard, two-part

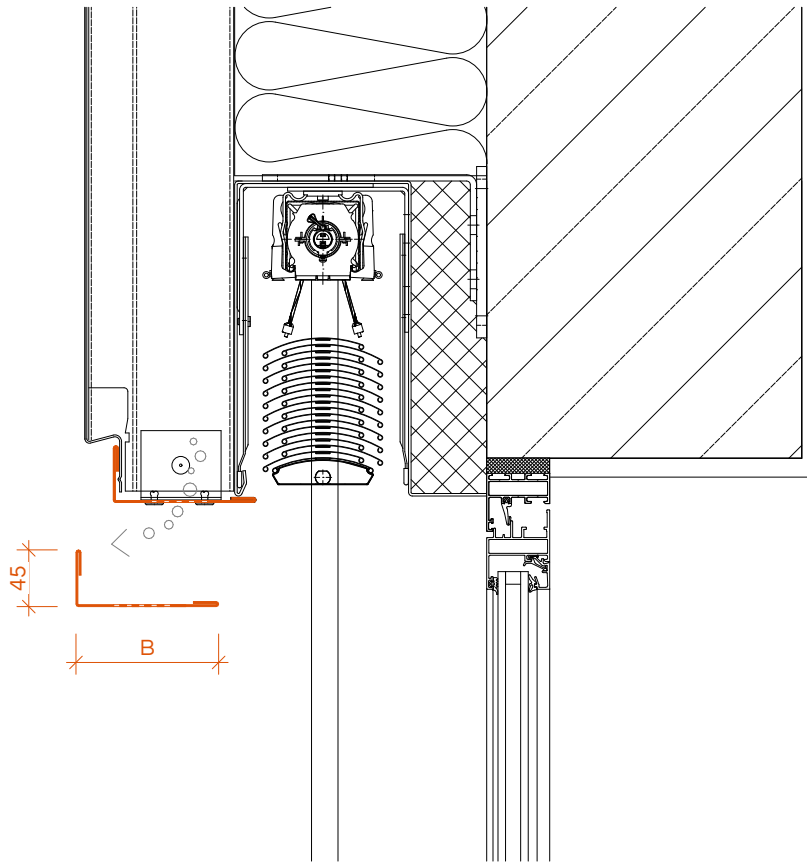


HORIZONTAL CUT M 1:6

L02 PRO+ soffit connection  
standard, one- or two-part

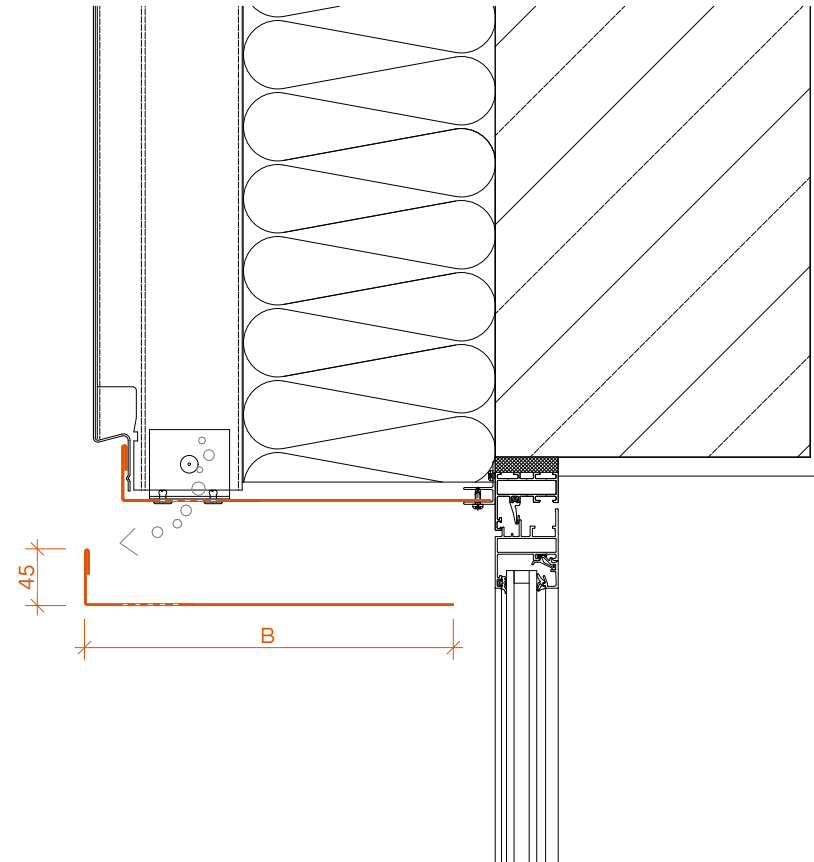


## W01 / W02 | LINTEL CONNECTION



VERTICAL CUT M 1:6

W01 PRO+ lintel connection suitable for sun protection  
one-part, perforated, in facade color



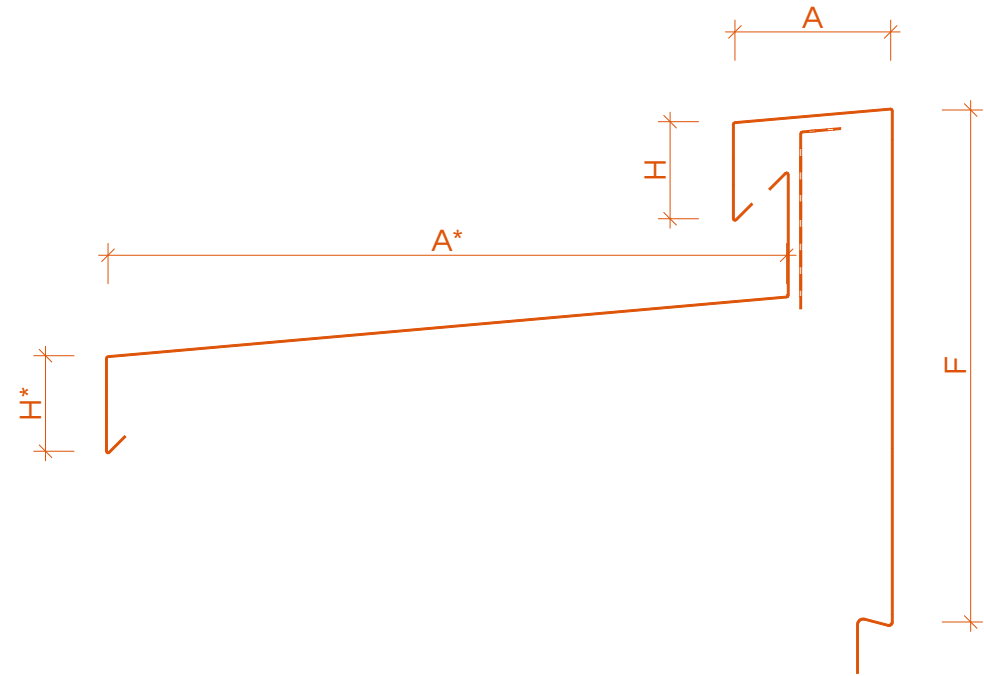
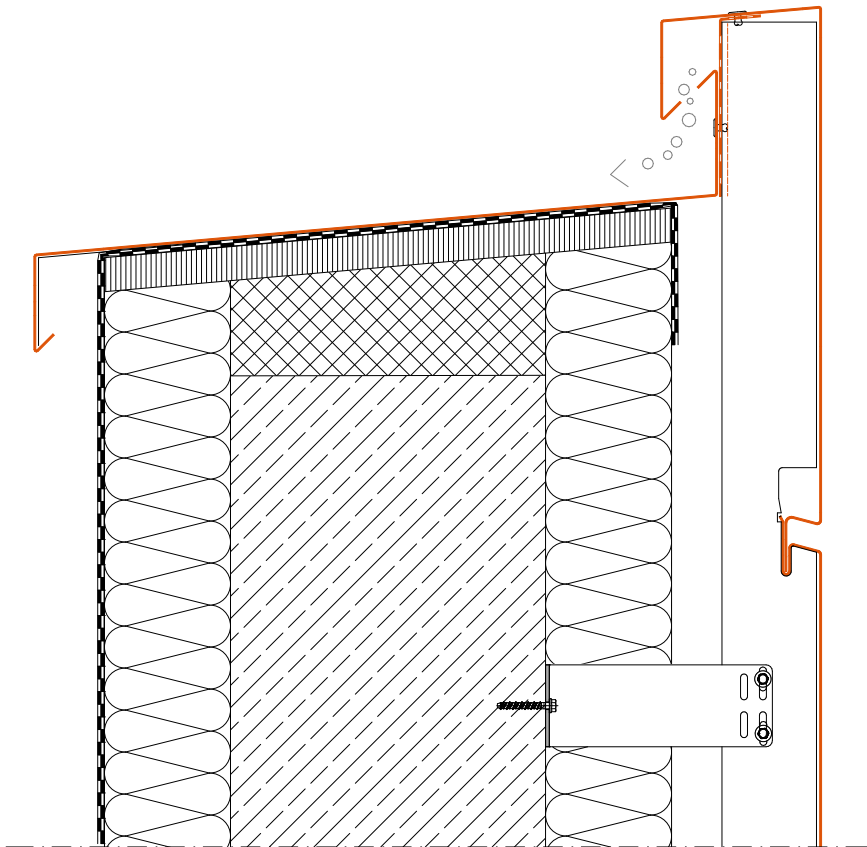
VERTICAL CUT M 1:6

W02 PRO+ lintel connection  
one-part, perforated, in facade color



# A01 | ATTICA DESIGN TWO-PART

VERTICAL CUT M 1:6



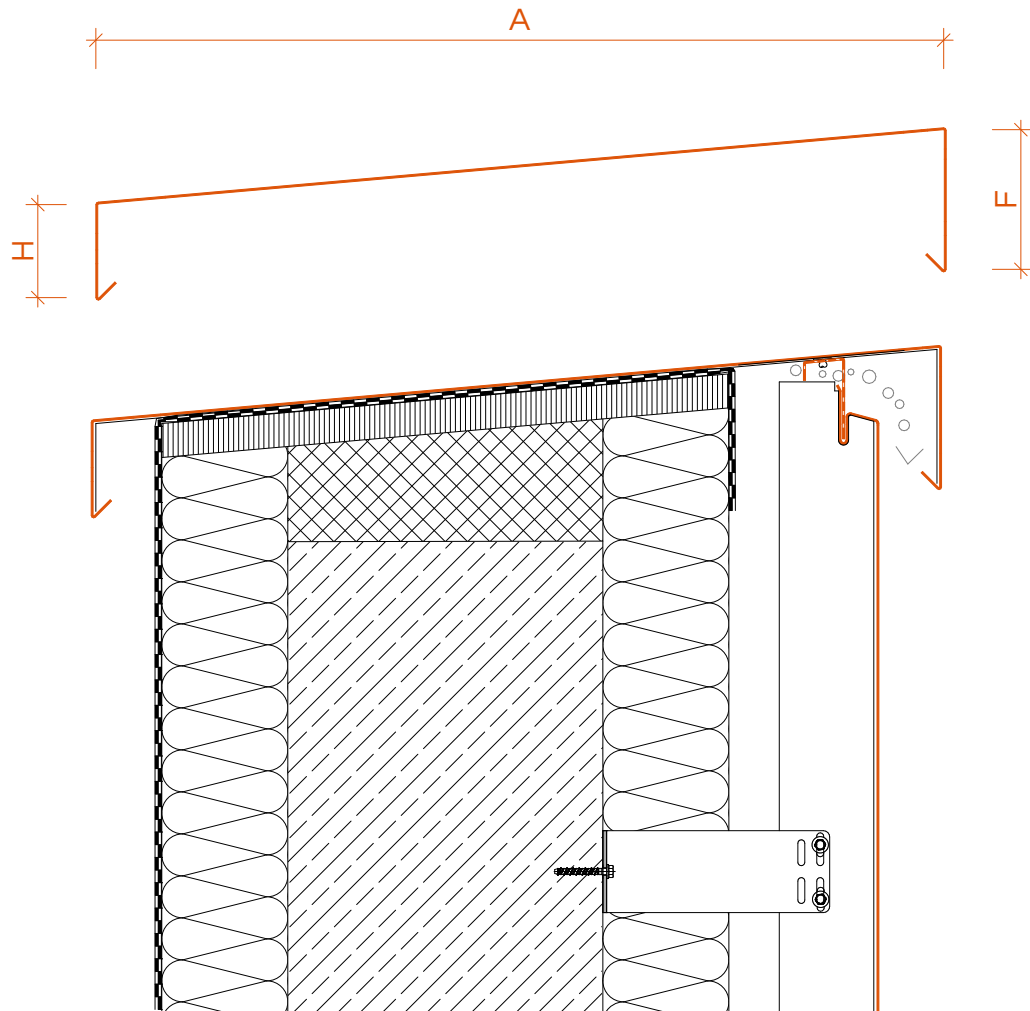
A01 PRO+ attica design  
flush with facade, two-part, attica edge invisible



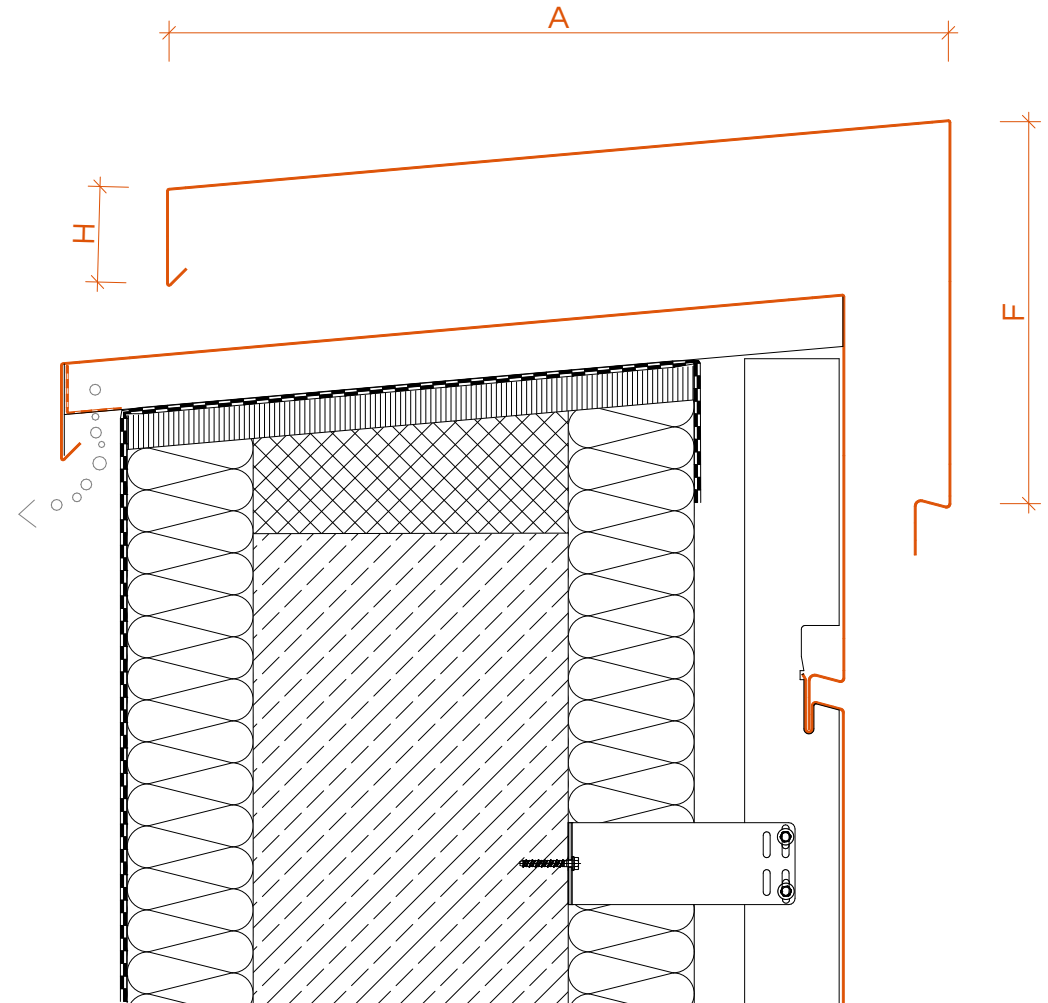
# A02 / A03 | ATTICA DESIGN ONE-PART

VERTICAL CUT M 1:6

A02 PRO+ attica design  
standard, one-part

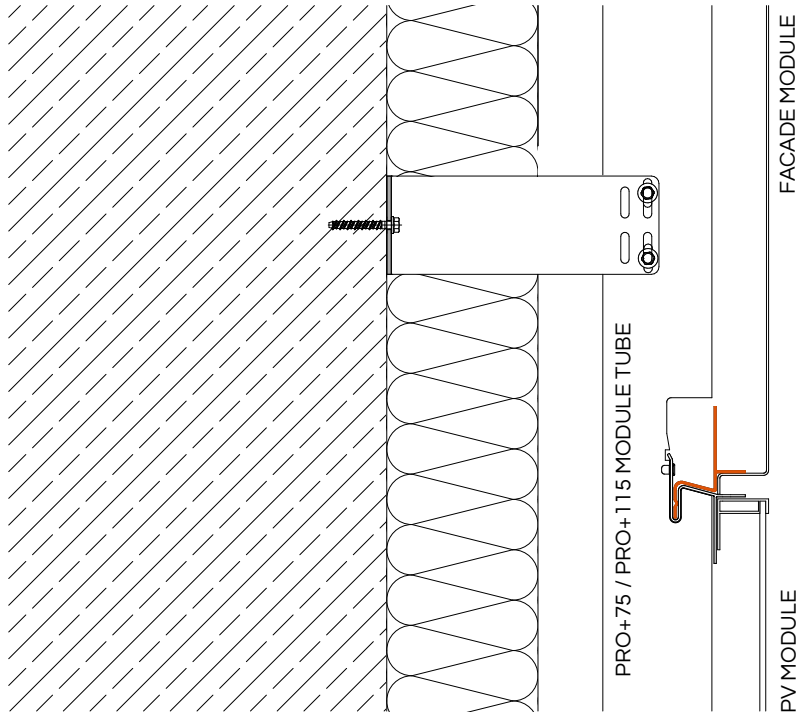


A03 PRO+ attica design  
flush with facade, one-part,  
edged from facade module  
max. 1100 mm, fully enclosing

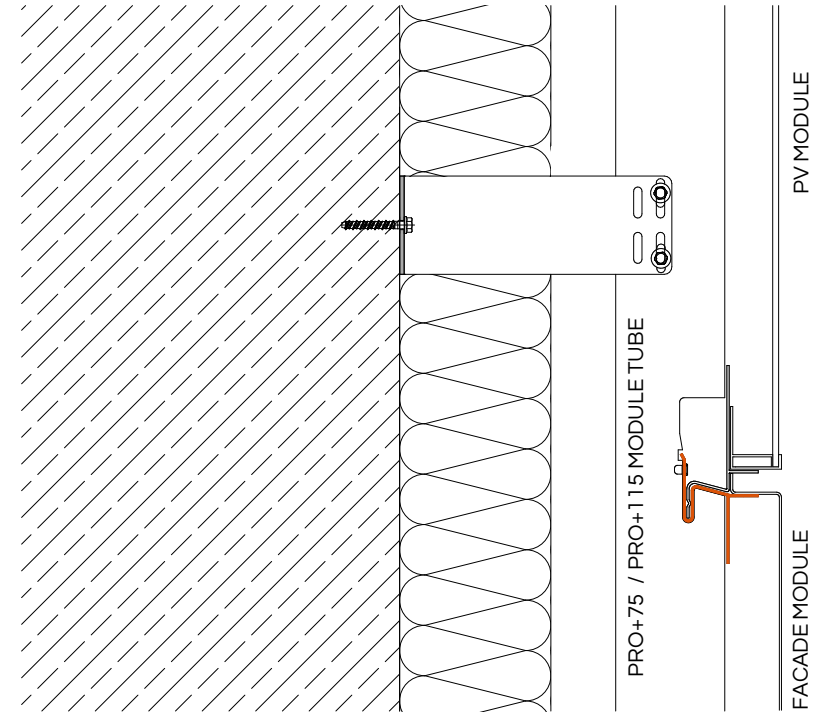




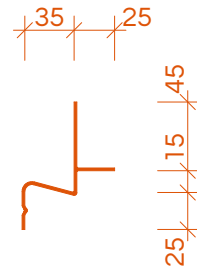
VERTICAL CUT M 1:5



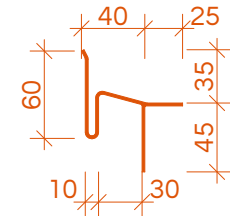
VERTICAL CUT M 1:5



X01 PRO+ Flex bottom

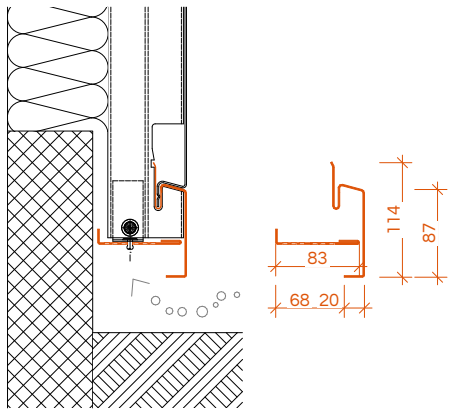


X02 PRO+ Flex top

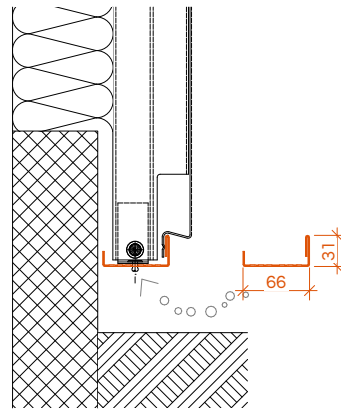


X01 / X02 PRO+ Flex | transition from PRO+ SIDING

to PRO+ PV, ventilation grille, lamellas, installations in the facade



S01 PRO+ basedesign  
flush with the facade, two-part



S02 PRO+ basedesign  
standard, one-part



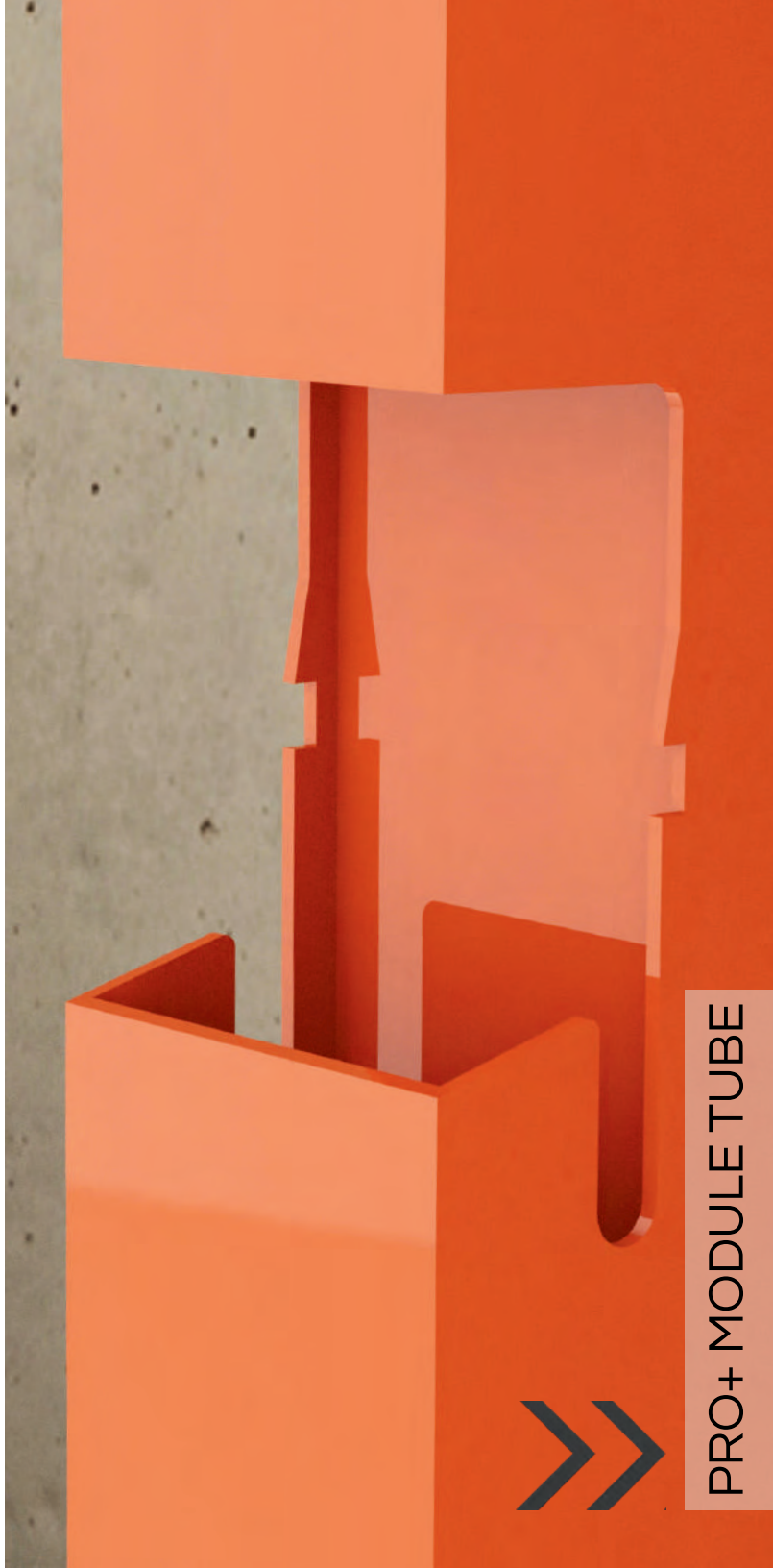
# NOTES

A large grid of graph paper for taking notes, consisting of 30 columns and 30 rows of small squares.

PRO+ SIDING  
PRO+ PV  
PRO+ GREEN



PRO+ BRACKET FIXED POINT




PRO+ MODULE TUBE




PRO+ SIDING

 GRAMM PROFILTECHNIK GMBH  
Spatenstraße 10  
88046 Friedrichshafen  
Tel. +49 7541 938780-0

 [info@proplus-fassade.com](mailto:info@proplus-fassade.com)

 [www.proplus-fassade.com](http://www.proplus-fassade.com)

 PRO+ das Fassadensystem

 [proplus.fassade](https://www.instagram.com/proplus.fassade)

 PRO+ das Fassadensystem

 PRO+ das Fassadensystem

